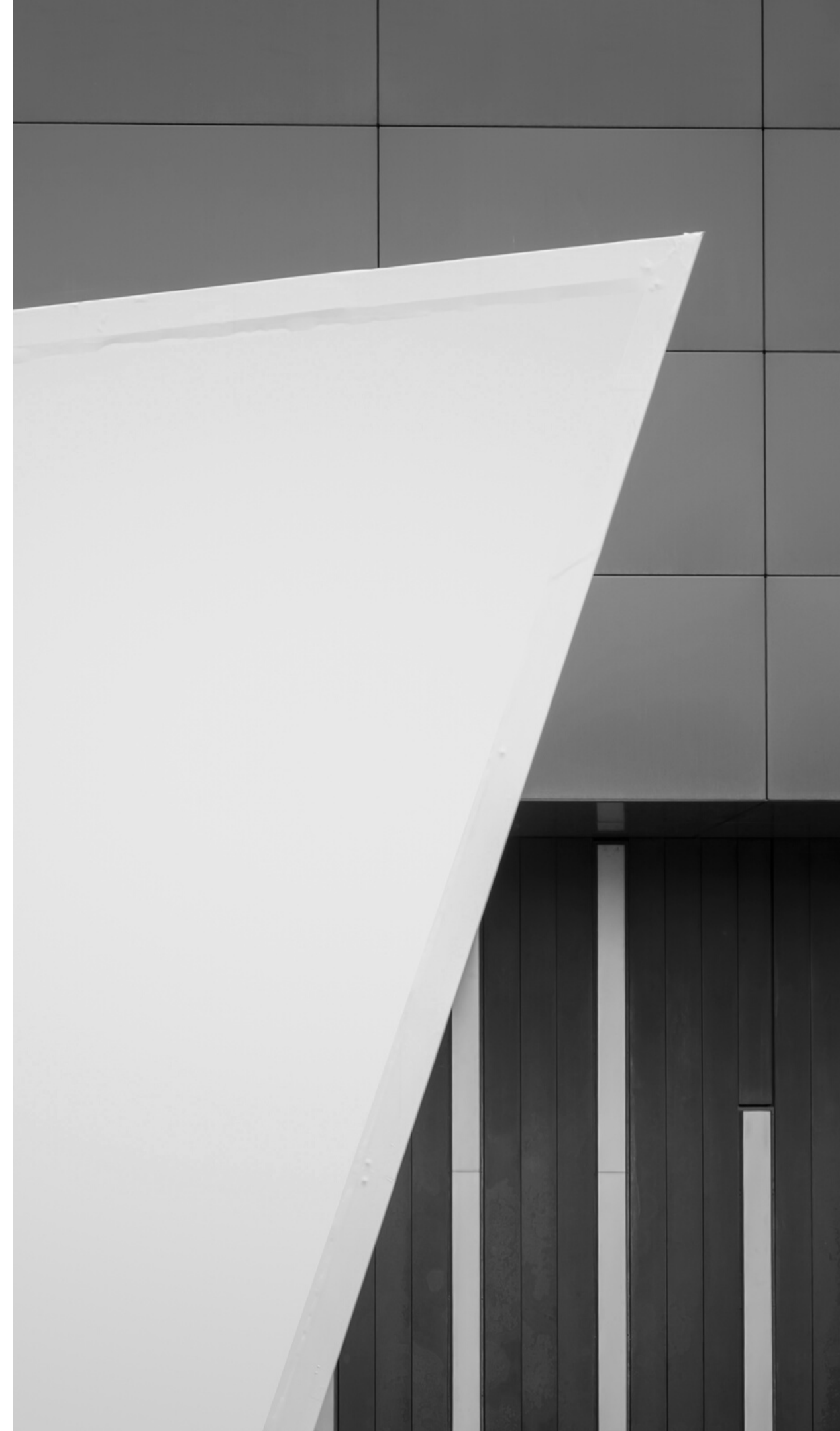
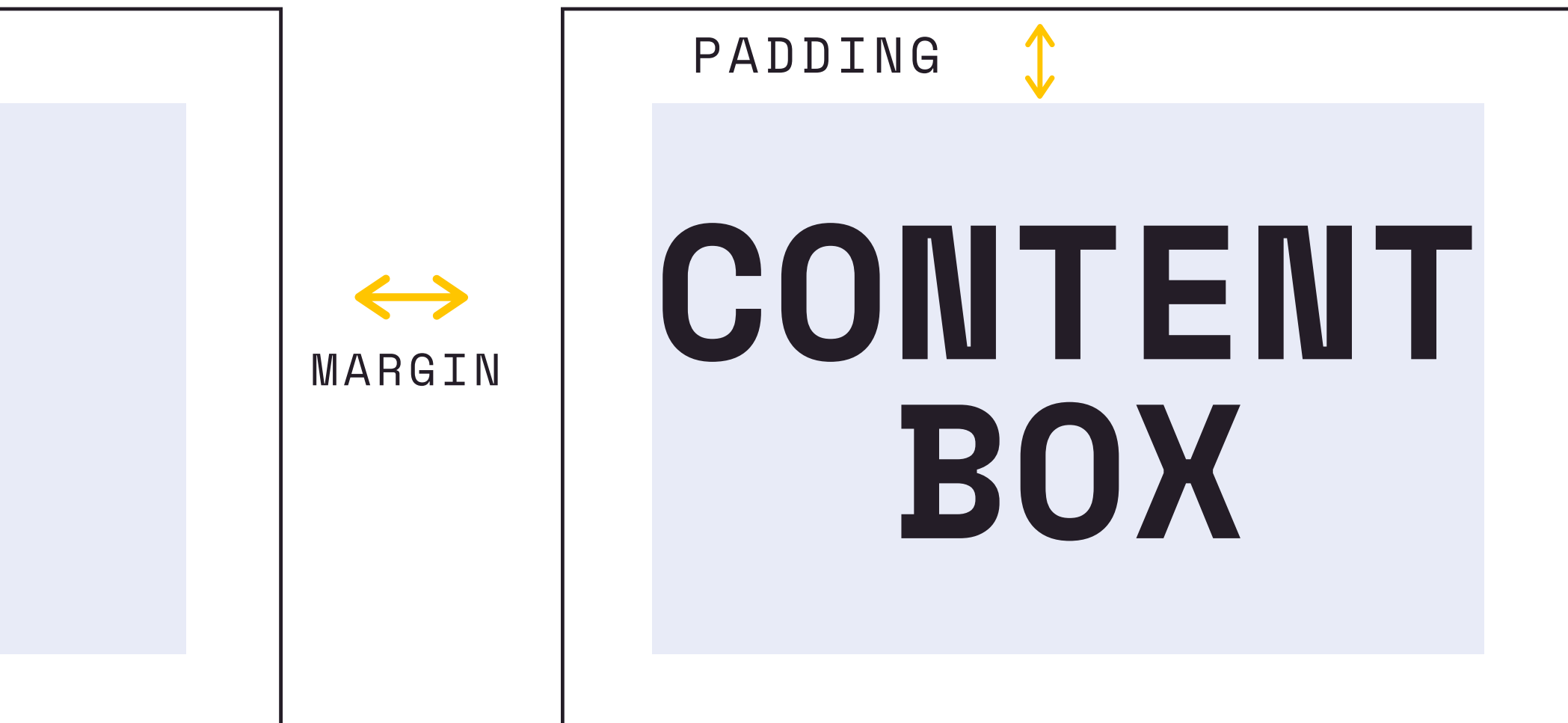


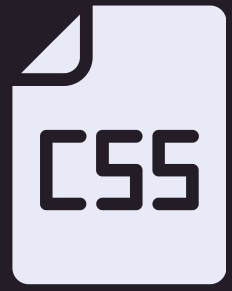
WEB DEVELOPER BOOTCAMP

THE CSS BOX MODEL

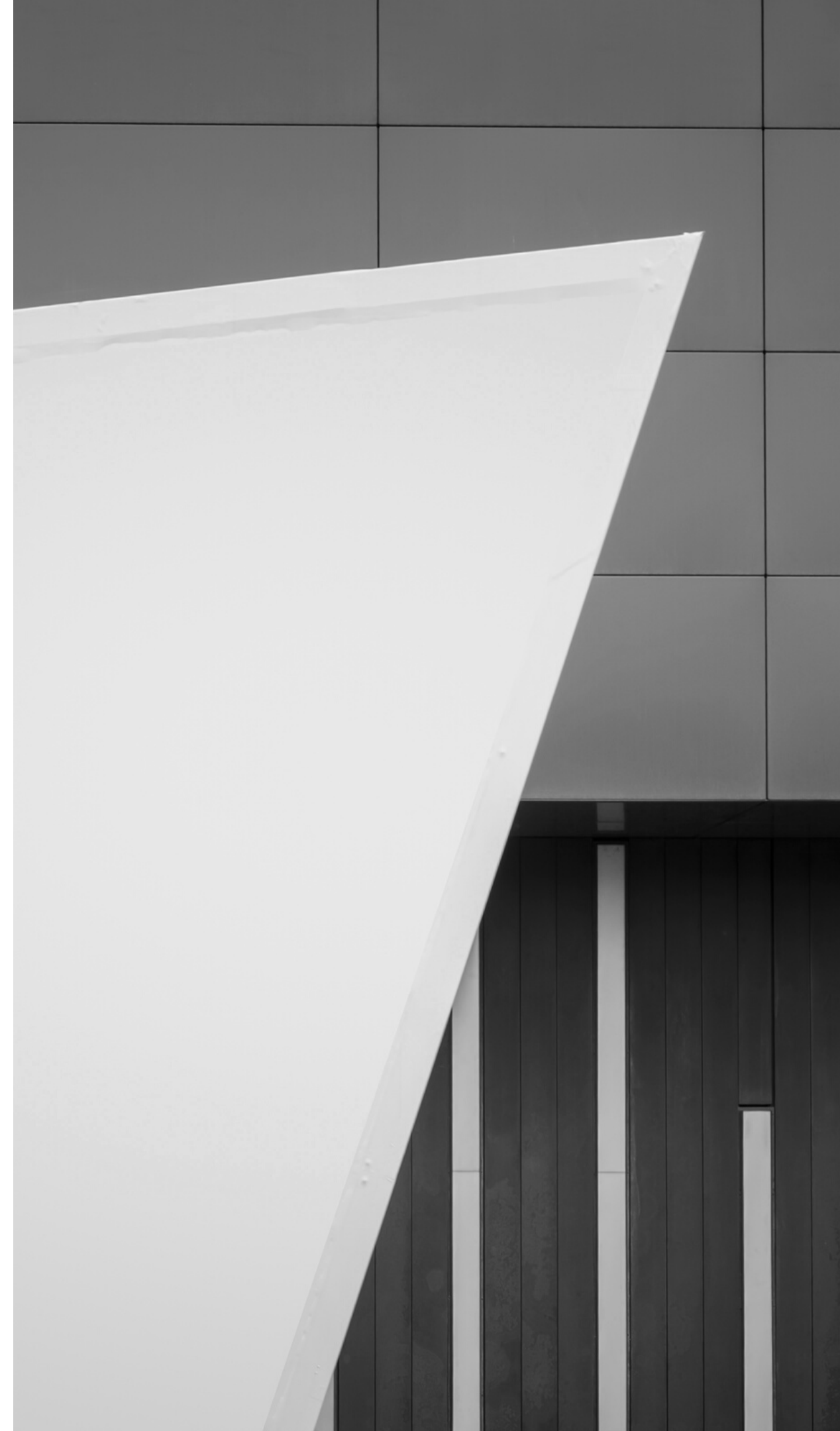
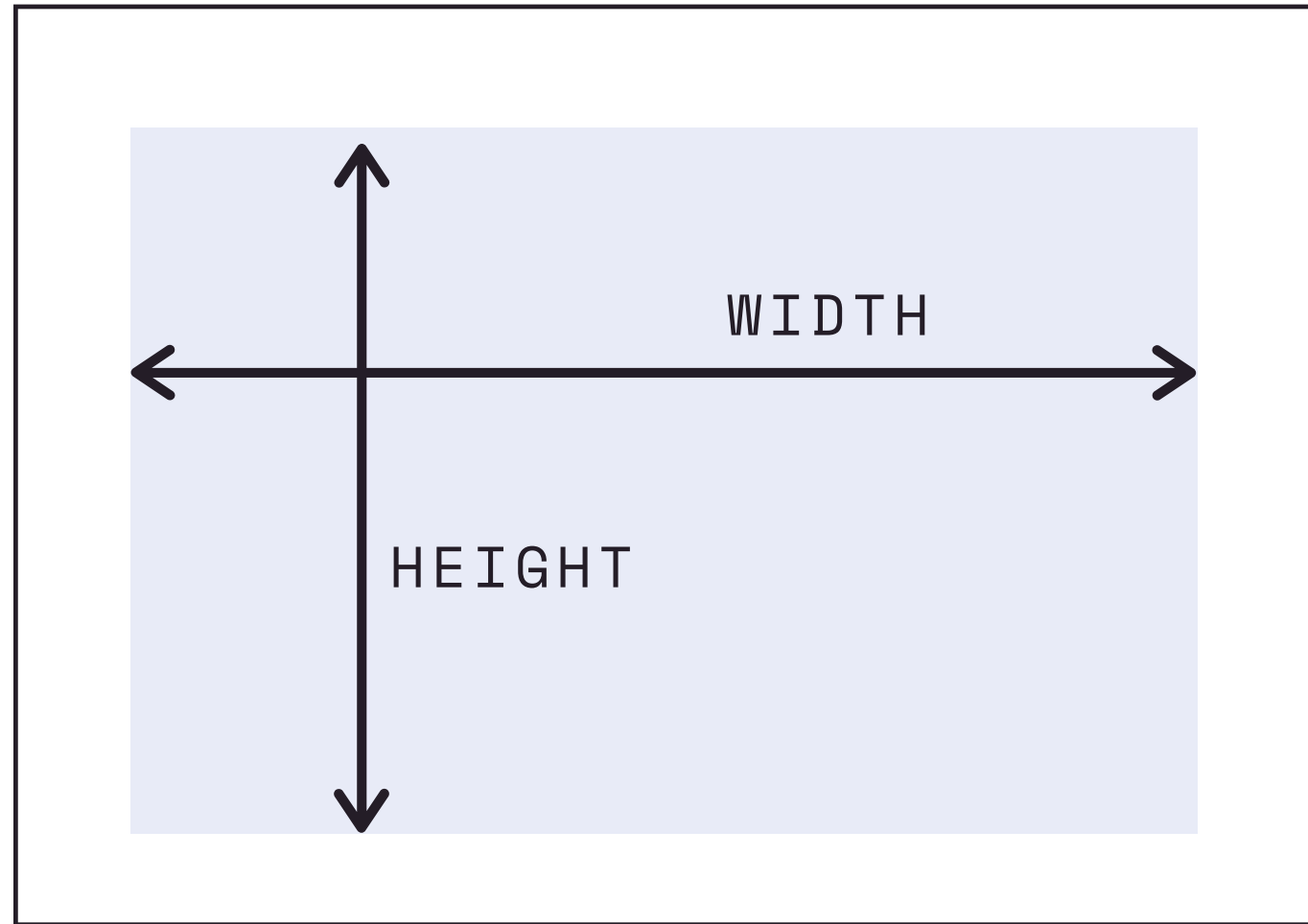
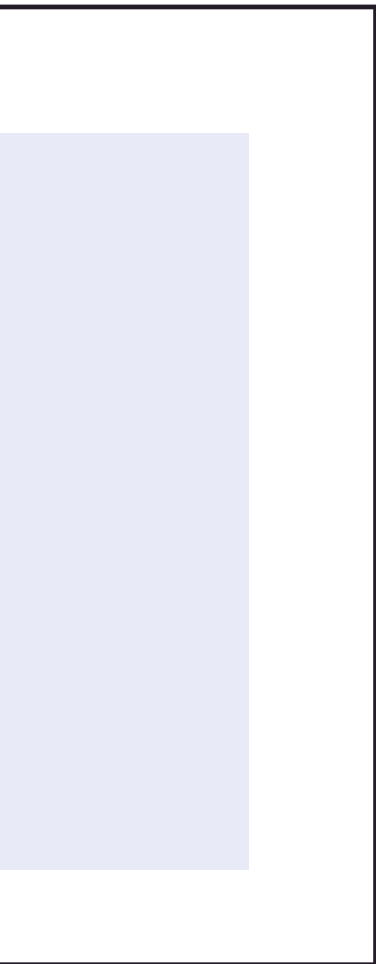


The Box Model



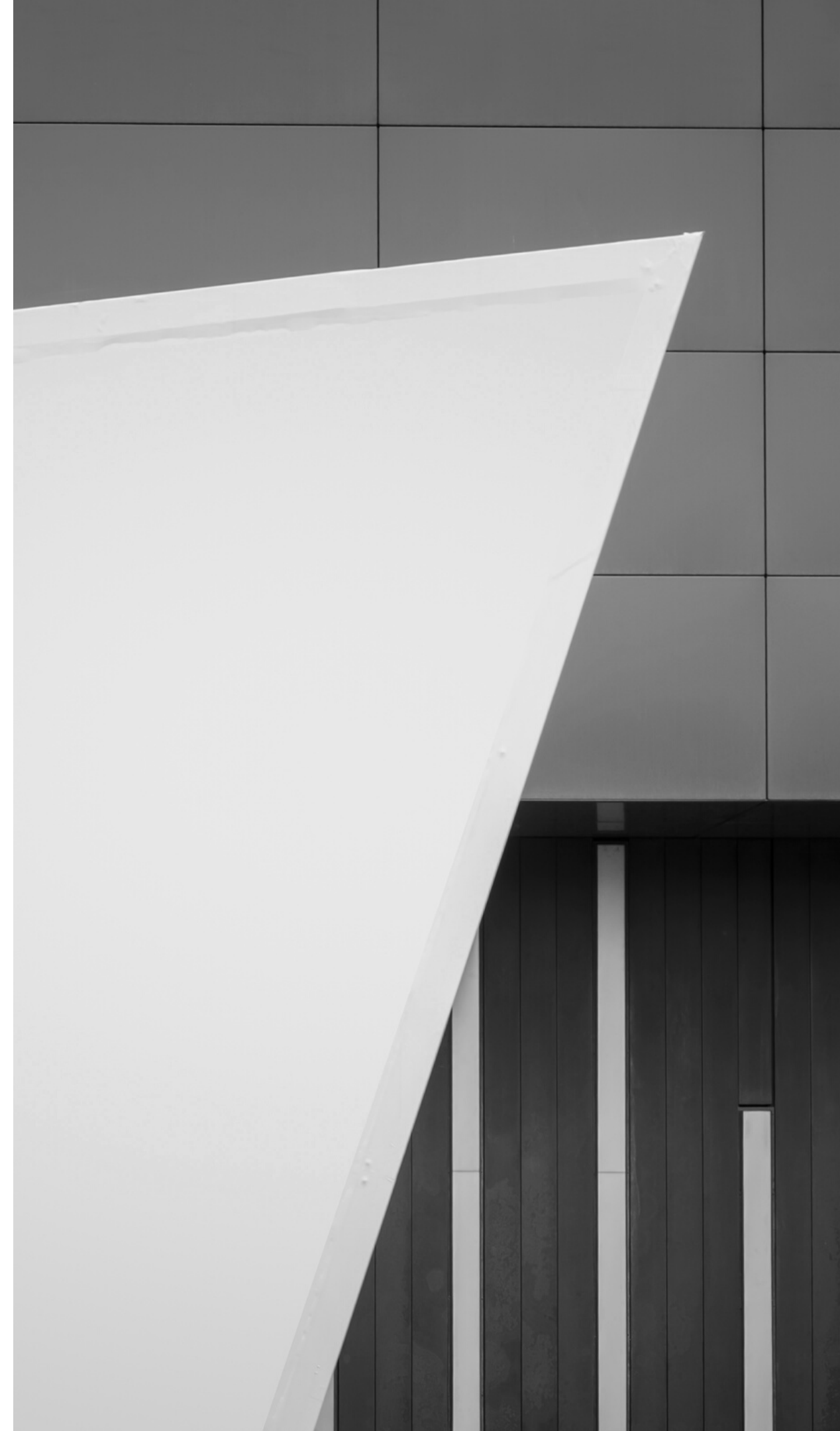
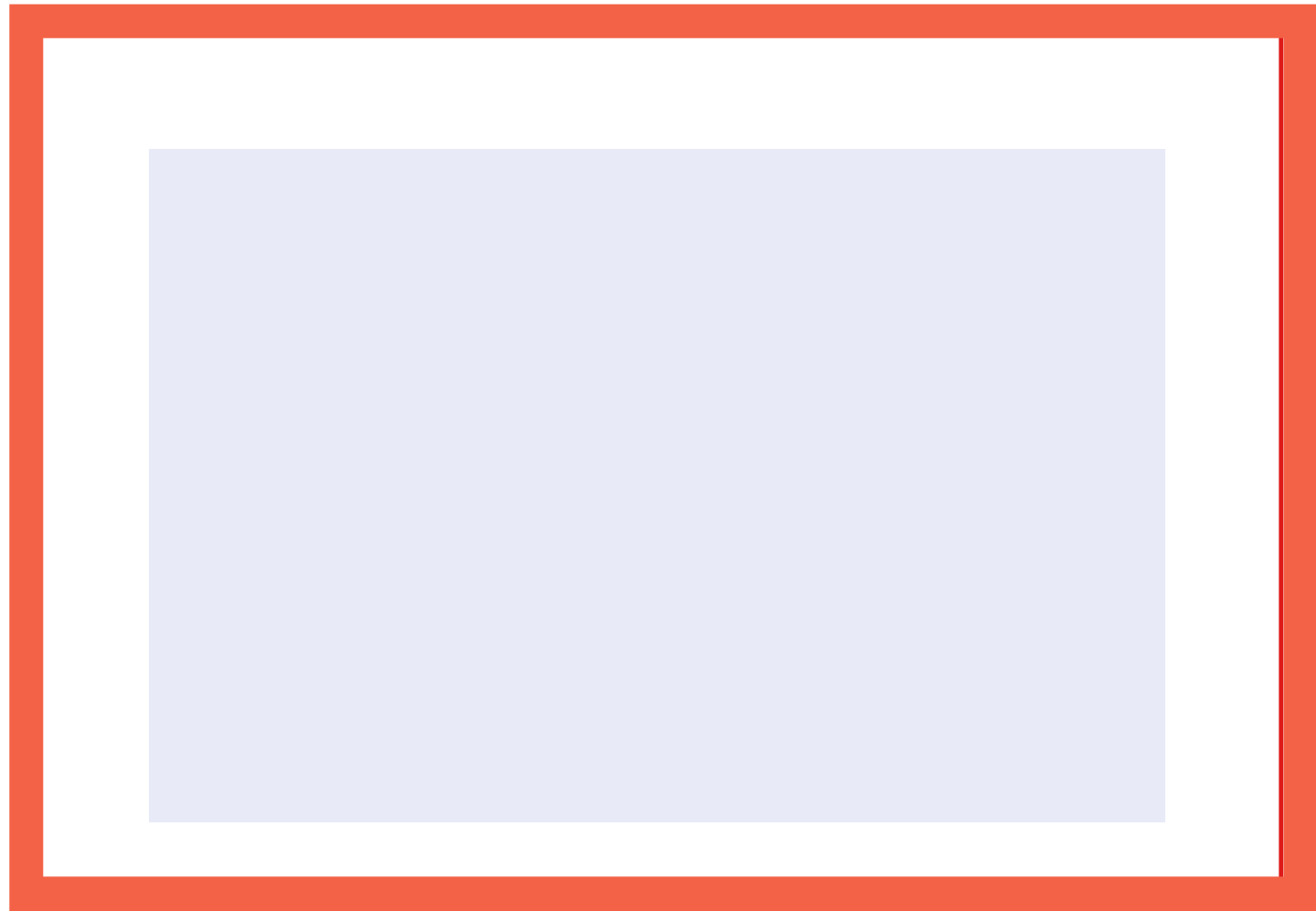


Width & Height





Border



Border Properties

(the important ones)



BORDER-WIDTH

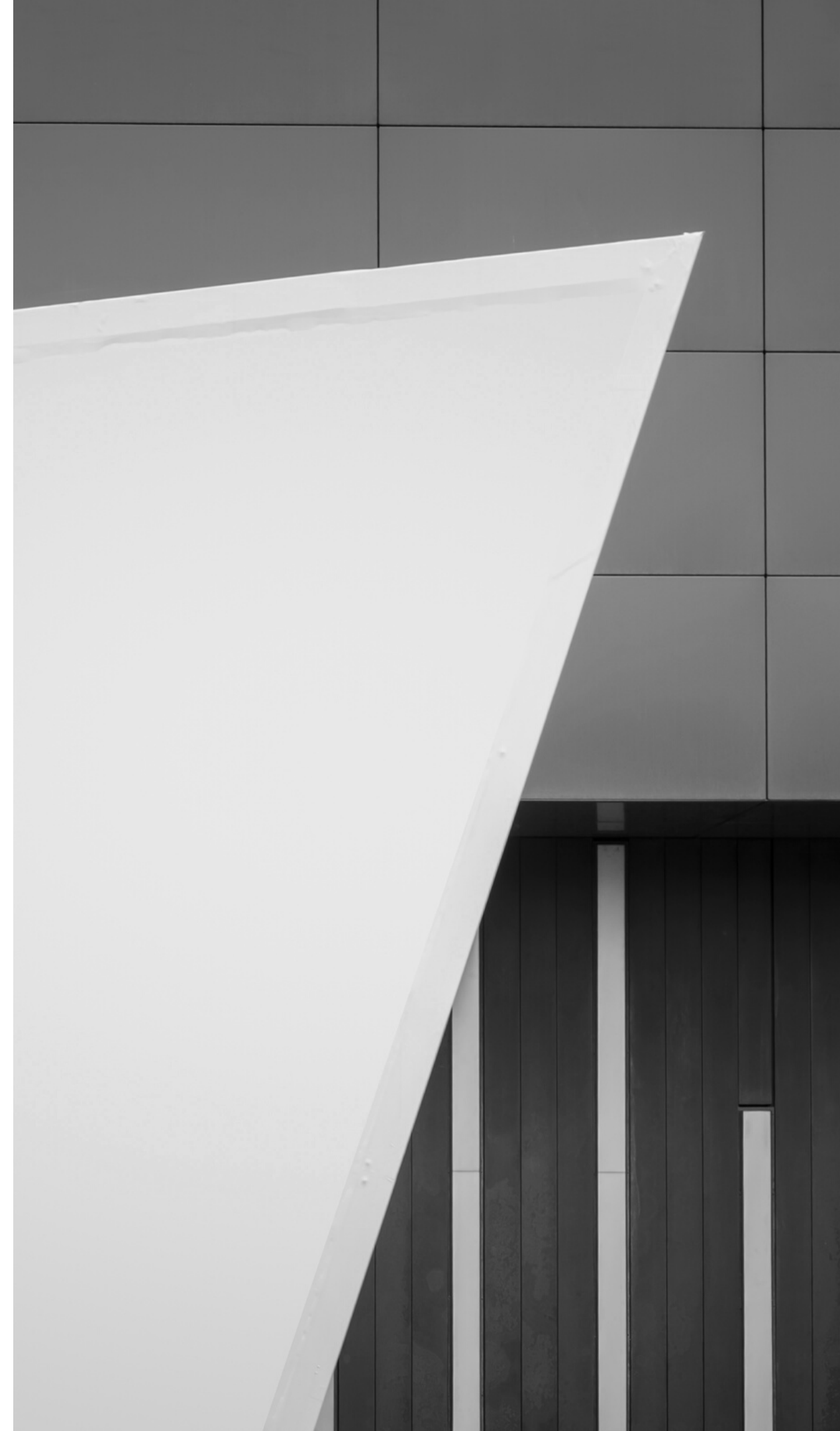
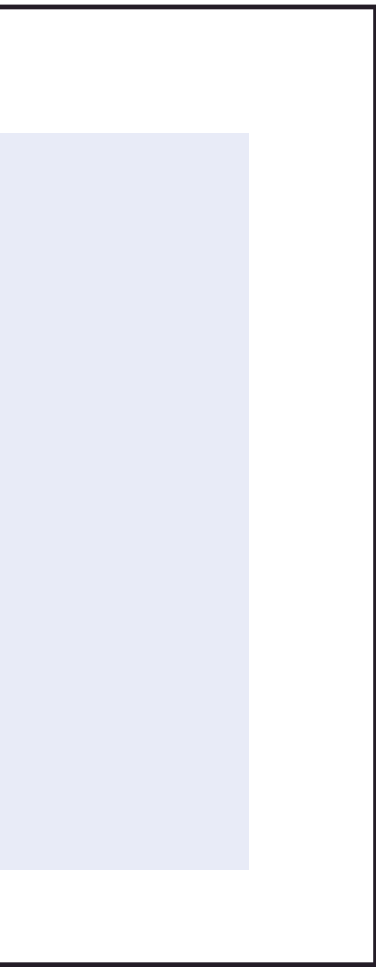
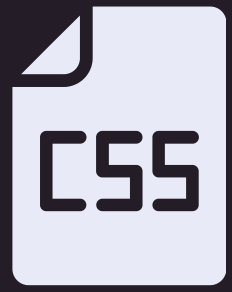
Controls the thickness of the border.

BORDER-COLOR

Controls the...color of the border

BORDER-STYLE

Controls the line style - dashed, solid, etc.



```
width=device-width, initial-scale=1.0, maximum-scale=1.0, user-scalable=no" type="image/x-icon">  
icon.ico" type="image/x-icon">  
stylesheet" href="css/materialize.min.css" media="screen, projection" type="text/css">  
f="https://maxcdn.bootstrapcdn.com/font-awesome/4.7.0/css/font-awesome.min.css" type="text/css">  
ef="/css/animate.css">  
ef="css/theme.css">  
rapper">  
tainer">  
class="brand-logo hide-on-med-and-up"><span style="font-weight: bold; font-size: 2em;">  
ainer">  
w">  
12 m8 18 hide-on-small-only">  
ght:400">starter</span><span style="font-weight: bold; font-size: 2em;">  
tup network and workspace tool for from  
span id="banner-meta" style="font-weight: bold; font-size: 2em;">
```

Individual Properties

- PADDING-LEFT
- PADDING-RIGHT
- PADDING-BOTTOM
- PADDING-TOP

Shorthand Property

SET ALL FOUR SIDES AT ONCE!



Padding Shorthand Property

Apply to all four sides

```
padding: 10px;
```

vertical | horizontal

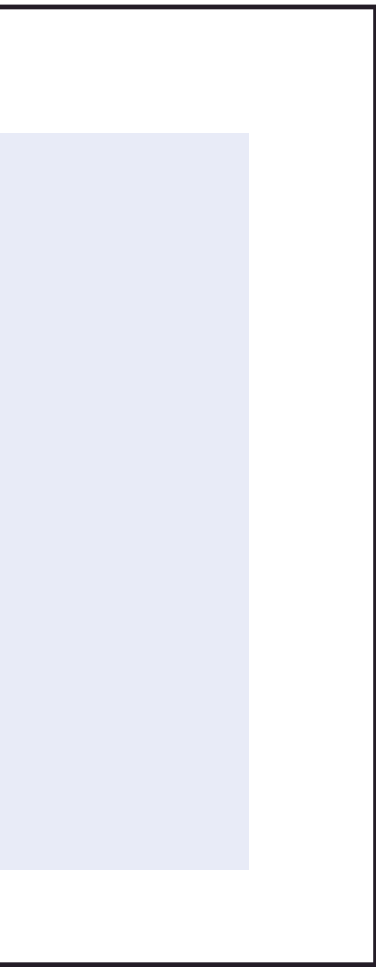
```
padding: 5px 10px;
```

top | horizontal | bottom

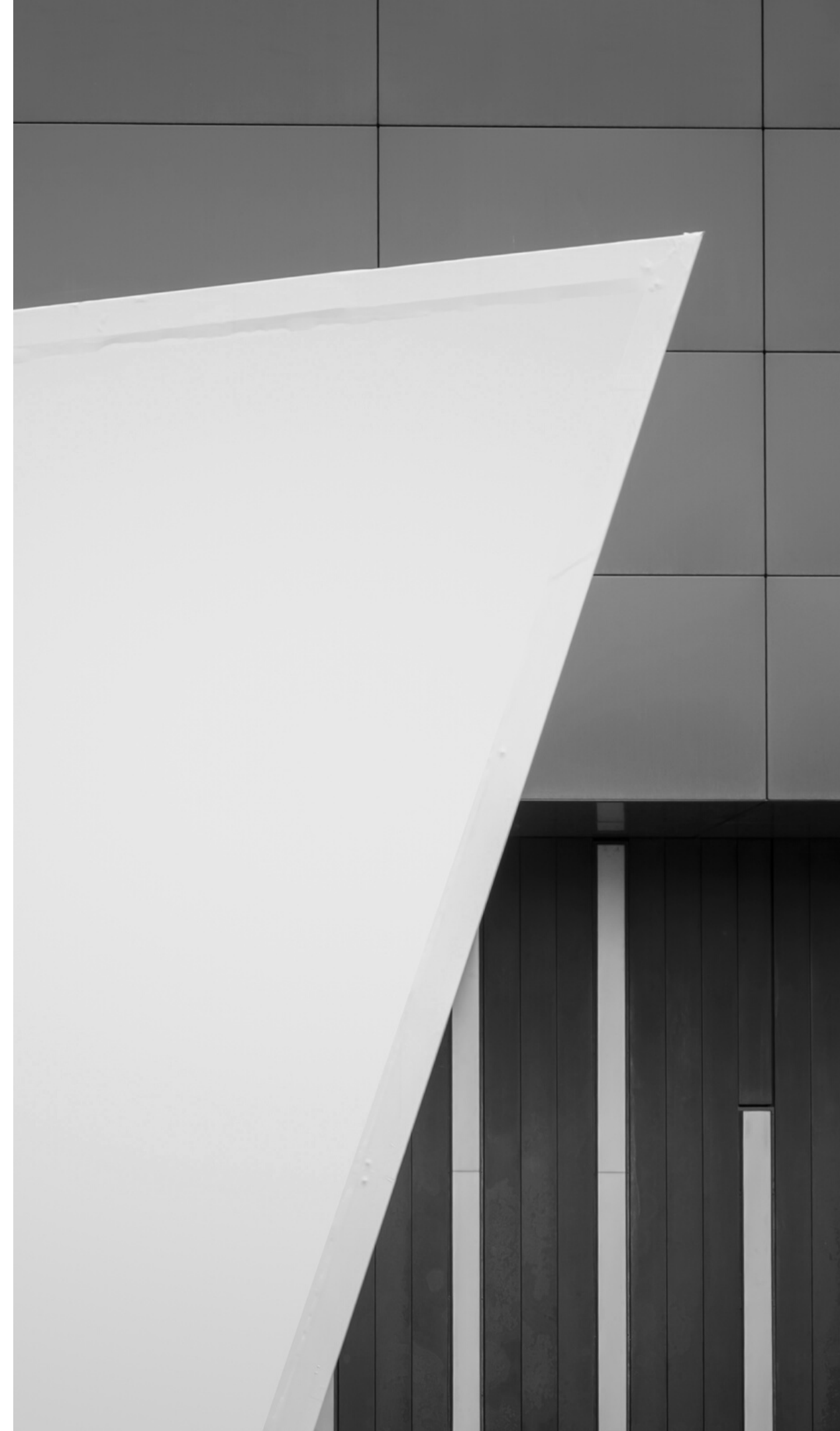
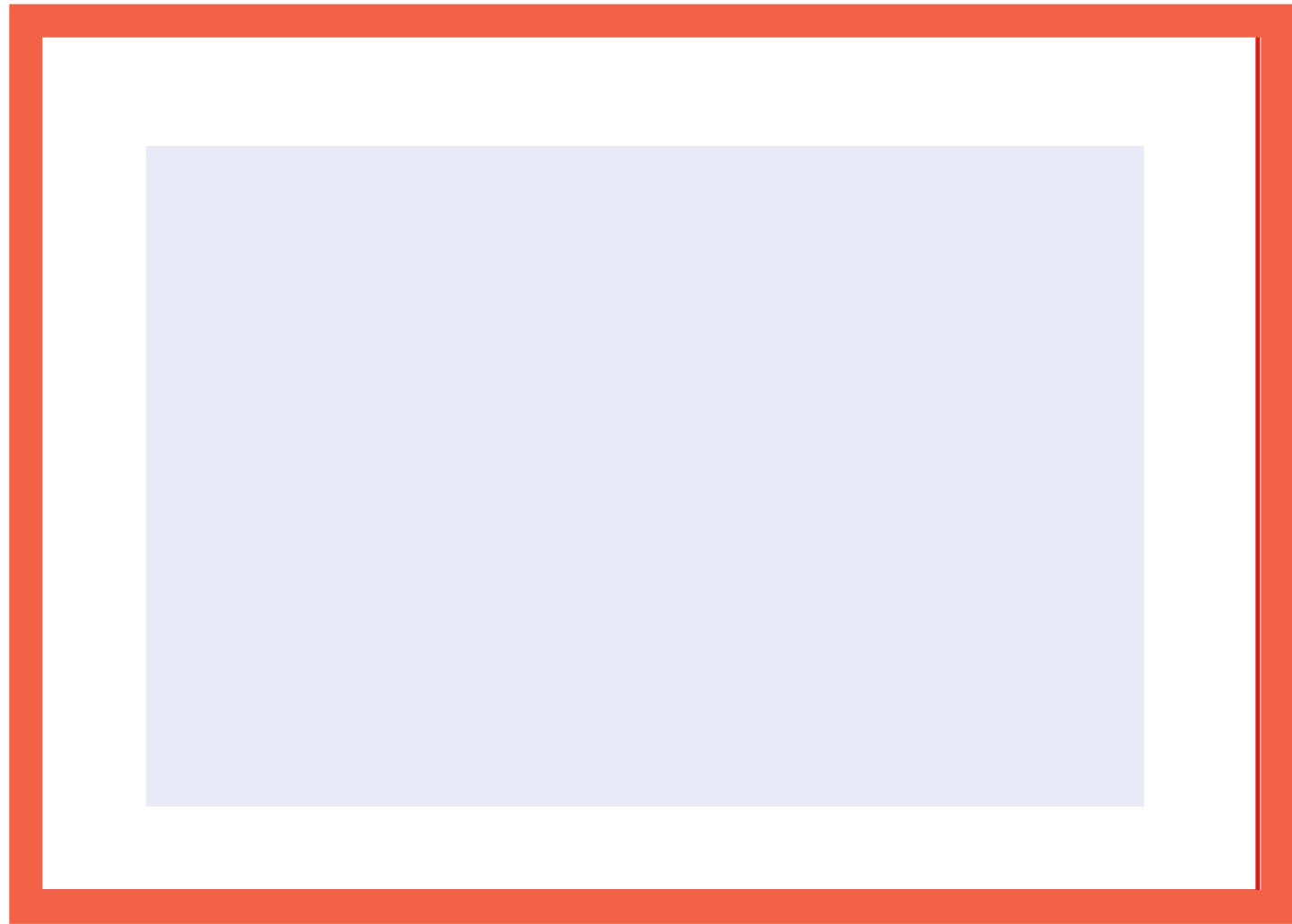
```
padding: 1px 2px 2px;
```

top | right | bottom | left

```
padding: 5px 1px 0 2px;
```

↔
MARGIN



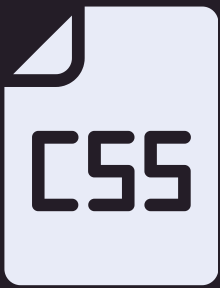
```
width=device-width, initial-scale=1.0, maximum-scale=1.0, user-scalable=no" type="image/x-icon">
ef="/favicon.ico" type="image/x-icon">
icon.ico" type="image/x-icon">
stylesheet" href="css/materialize.min.css" media="screen, projection"
f="https://maxcdn.bootstrapcdn.com/font-awesome/4.7.0/css/font-awesome.min.css"
ef="/css/animate.css">
ef="css/theme.css">
rapper">
tainer">
class="brand-logo hide-on-med-and-up"><span style="font-weight: bold; font-size: 24px; margin-right: 10px;">
w">
12 m8 18 hide-on-small-only">
ight:400">starter</span><span style="font-weight: bold; font-size: 24px; margin-right: 10px;">
tup network and workspace tool for
span id="banner-meta" style="font-weight: bold; font-size: 24px; margin-right: 10px;">
```

Individual Properties

- MARGIN-LEFT
- MARGIN-RIGHT
- MARGIN-BOTTOM
- MARGIN-TOP

Shorthand Property

SET ALL FOUR SIDES AT ONCE!



Margin Shorthand Property

Apply to all four sides

```
margin: 10px;
```

vertical | horizontal

```
margin: 5px 10px;
```

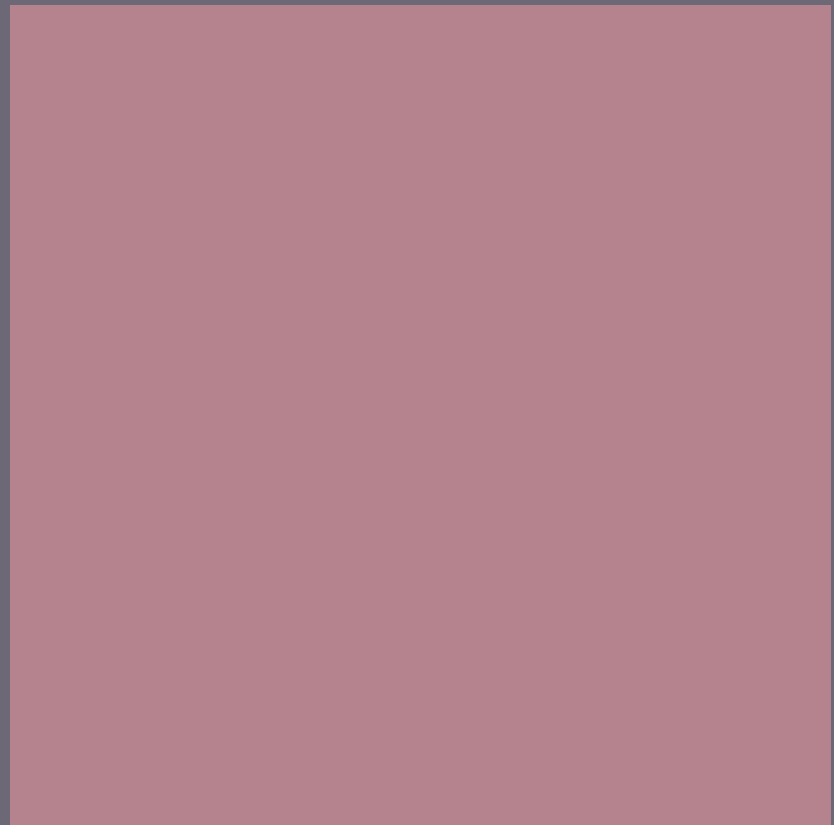
top | horizontal | bottom

```
margin: 1px 2px 2px;
```

top | right | bottom | left

```
margin: 5px 1px 0 2px;
```

Display Property



INLINE ELEMENTS



- Inline elements fit in alongside other elements
- Block level elements take up a whole "block" of space.

BLOCK ELEMENTS



Display Property

(our first encounter)

INLINE

Width & Height are ignored. Margin & padding push elements away horizontally but not vertically.

BLOCK

Block elements break the flow of a document. Width, Height, Margin, & Padding are respected.

INLINE-BLOCK

Behaved like an inline element except Width, Height, Margin, & Padding are respected

A ruler is positioned vertically on the left side of the image, with the numbers 4 and 6 clearly visible. The ruler is slightly tilted and overlaps the top and bottom edges of the main content area.

WEB DEVELOPER BOOTCAMP

CSS UNITS



Relative

- EM
- REM
- VH
- VW
- %
- AND MORE!

Absolute

- PX
- PT
- CM
- IN
- MM

Absolute Units



**PX - BY FAR THE MOST
COMMONLY USED ABSOLUTE UNIT**

1px does not necessarily equal the width
of exactly one pixel!

Not recommended for responsive websites.

percentages



PERCENTAGES ARE ALWAYS RELATIVE TO SOME OTHER VALUE

Sometimes, it's a value from the parent and other times it's a value from the element itself.

width: 50% - half the width of the parent

line-height: 50% - half the font-size of the element itself

em



EM'S ARE RELATIVE UNITS

With font-size, 1em equals the font-size of the parent. 2em's is twice the font-size of the parent, etc.

With other properties, 1em is equal to the computed font-size of the element itself.



rem

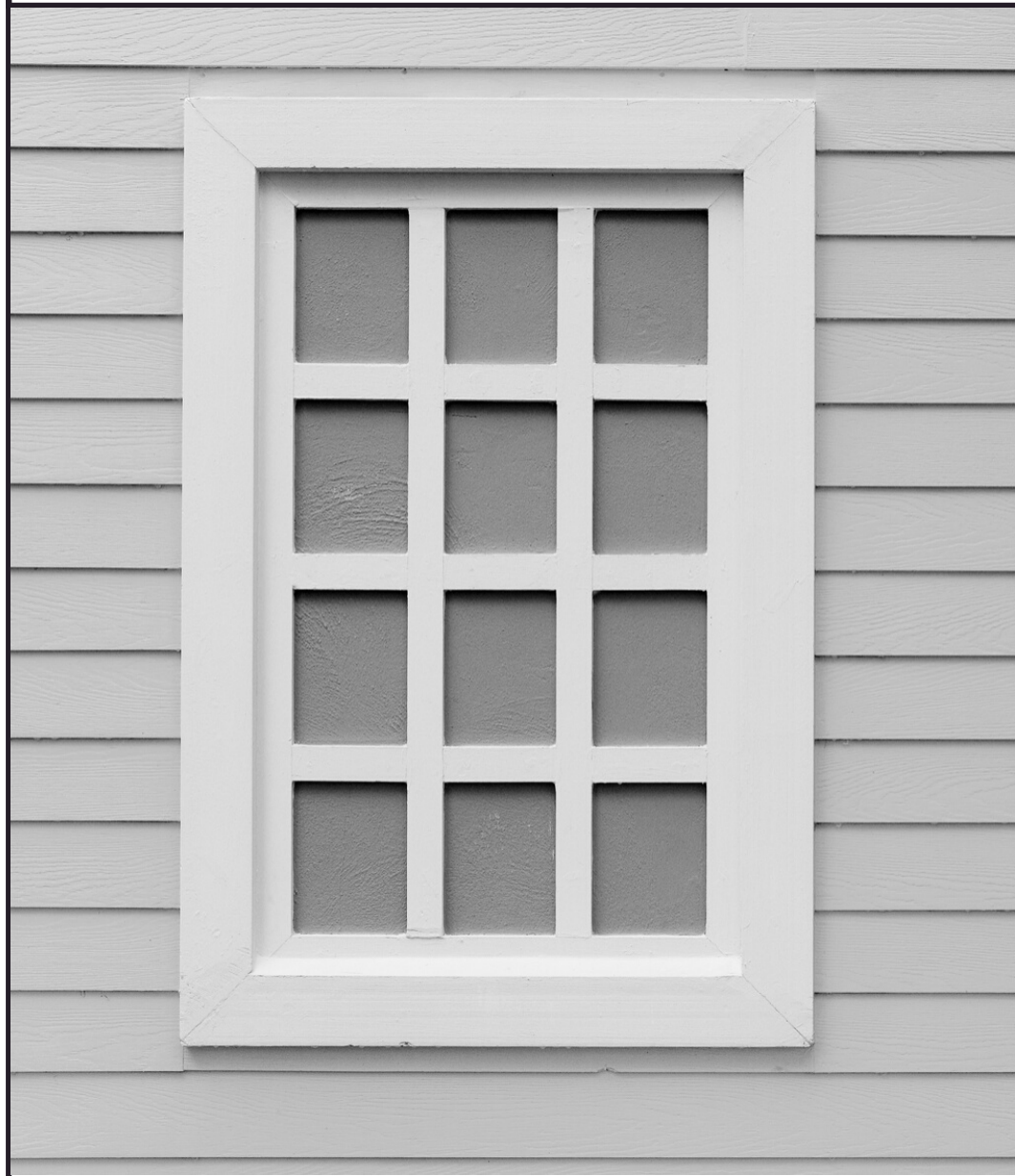


ROOT EMS

Relative to the **root html element's** font-size. Often easier to work with.

If the root font-size is 20px, 1 rem is always 20px, 2rem is always 40px, etc.

VW & vh



VIEW HEIGHT & VIEW WIDTH

`1vw` is 1% of the width of the viewport

`1vh` is 1% of the height of the viewport

For example: `height: 100vh` would make an element take up the full height on screen