

**Opacity +
Alpha Channel**

POSITION



rgba(0, 209, 112, 0.5)

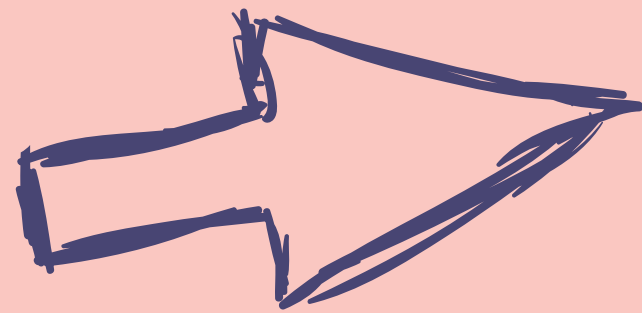
red

green

blue

alpha

Transitions



Transition:

PROPERTY NAME | DURATION | TIMING FUNCTION | DELAY

Transform





```
/* Function values */
transform: matrix(1.0, 2.0, 3.0, 4.0, 5.0, 6.0);
transform: matrix3d(1, 0, 0, 0, 0, 1, 0, 0, 0, 0, 1, 0, 0, 0, 0, 1);
transform: perspective(17px);
transform: rotate(0.5turn);
transform: rotate3d(1, 2.0, 3.0, 10deg);
transform: rotateX(10deg);
transform: rotateY(10deg);
transform: rotateZ(10deg);
transform: translate(12px, 50%);
transform: translate3d(12px, 50%, 3em);
transform: translateX(2em);
transform: translateY(3in);
transform: translateZ(2px);
transform: scale(2, 0.5);
transform: scale3d(2.5, 1.2, 0.3);
transform: scaleX(2);
transform: scaleY(0.5);
transform: scaleZ(0.3);
transform: skew(30deg, 20deg);
transform: skewX(30deg);
transform: skewY(1.07rad);

/* Multiple function values */
transform: translateX(10px) rotate(10deg) translateY(5px);
```

The background features a soft, watercolor-style wash of colors. A large, irregular shape in shades of pink and light purple dominates the right side. On the left, there are smaller, more vibrant washes of blue and purple. The overall effect is artistic and textured.

background

GOOGLE FONTS

Google Fonts

Google Fonts

Google Fonts

Google Fonts

GOOGLE FONTS

GOOGLE FONTS

Google Fonts

Google Fonts

Google Fonts

Google Fonts

GOOGLE FONTS